

MONTHLY MEMBERSHIP PROGRESS REPORT

District 3232B2

Results as of: 5/31/2025

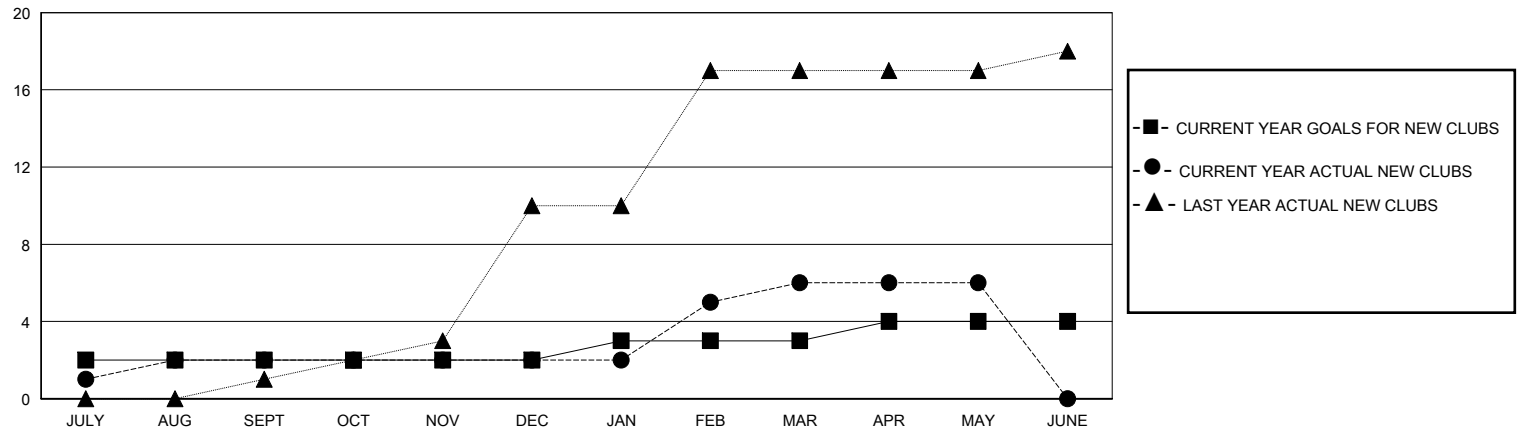
GMT:

LOCATION INDIA

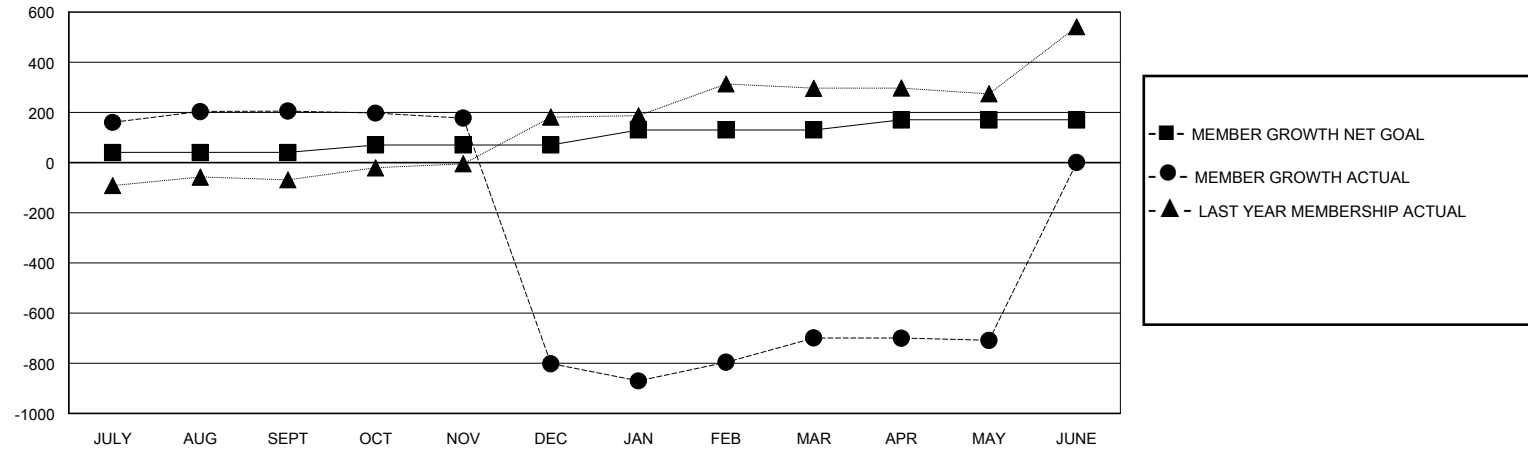
GMT CA

| Clubs | | | | Members | | | |
|-----------------------|---------------|-----------|---------------|-----------------------|------------------------|----------------------|--|
| RESULTS FOR 2024-2025 | | | | RESULTS FOR 2024-2025 | | | |
| QUARTER | NEW CLUB GOAL | NEW CLUBS | DROPPED CLUBS | QUARTER | MEMBER GROWTH NET GOAL | MEMBER GROWTH ACTUAL | DROPPED MEMBERS ACTUAL (including transfers) |
| JULY/AUG/SEPT | 2 | 2 | 0 | JULY/AUG/SEPT | 40 | 329 | 40 |
| OCT/NOV/DEC | 0 | 0 | 20 | OCT/NOV/DEC | 30 | 7 | 1,013 |
| JAN/FEB/MAR | 1 | 4 | 4 | JAN/FEB/MAR | 60 | 402 | 229 |
| APR/MAY/JUNE | 1 | 0 | 0 | APR/MAY/JUNE | 40 | 40 | 24 |

GOALS AND ACTUAL NEW CLUBS CUMULATIVE



GOALS AND ACTUAL MEMBERS CUMULATIVE



| | | | | |
|------------------------|--|---|---------------------------------------|----------------|
| DROPPED CLUBS: 24 | | 32 CLUBS OF 72 ADDED 1 OR MORE NEW MEMBERS | <u>GENDER DISTRIBUTION</u> | |
| | | | MALE | 1,323 (57.25%) |
| | | | FEMALE | 987 (42.71%) |
| <u>DROPPED MEMBERS</u> | | CLICK HERE FOR CUMULATIVE MEMBERSHIP DATA | | |
| DECEASED 3 | | | TOTAL FAMILY UNIT MEMBERS 1,598 | |
| CLUB CANCELLED 983 | | | | |
| OTHER 318 | | | FAMILY MEMBERS PAYING HALF DUES 1,151 | |
| TOTAL 1,304 | | | | |